

PINS TO LEAVE ALONE:

WIZ2820io:

9 - Reset

10 - CS

SD Card:

4 - CS

11 - MOSI (DOUT)

12 - MISO (DIN)

13 - SCK

Prop Shield:

2 - IRQ from motion sensors

5 - Amp enable

6 - Memory CS

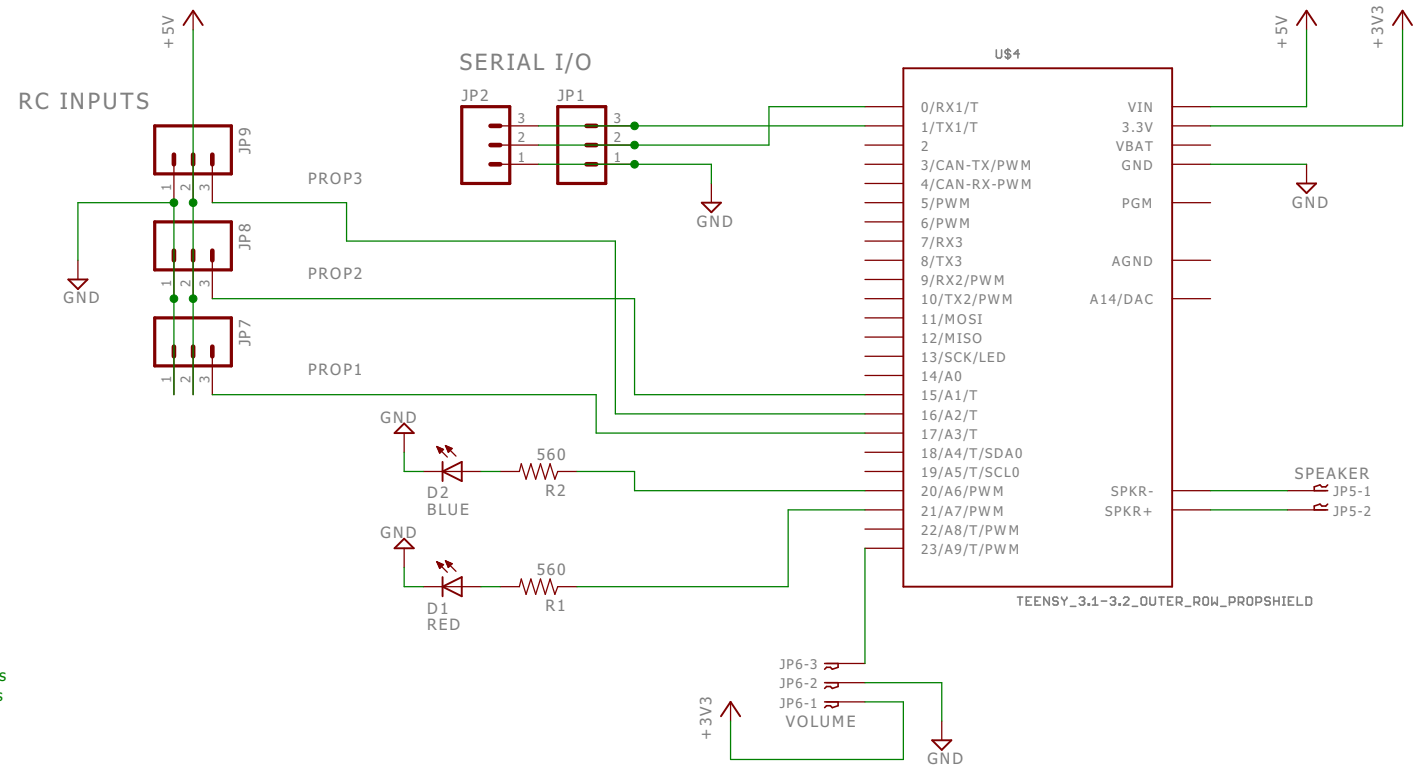
7 - LED data enable

A14 - DAC

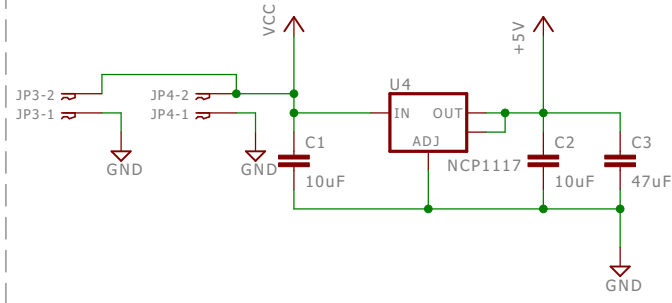
11-13 - SPI for onboard Flash

18 - SDA - I2C for motion sensors

19 - SCL - I2C for motion sensors



5 VOLT SUPPLY



TITLE: OP_Sound_Proto

Document Number: 1

REV:
1

Date: 1/6/2017 6:19 PM

Sheet: 1/1